

nPLAN

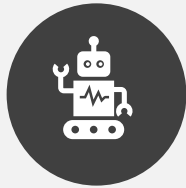
SUPPLY CHAIN PLANNING

# CANVAS

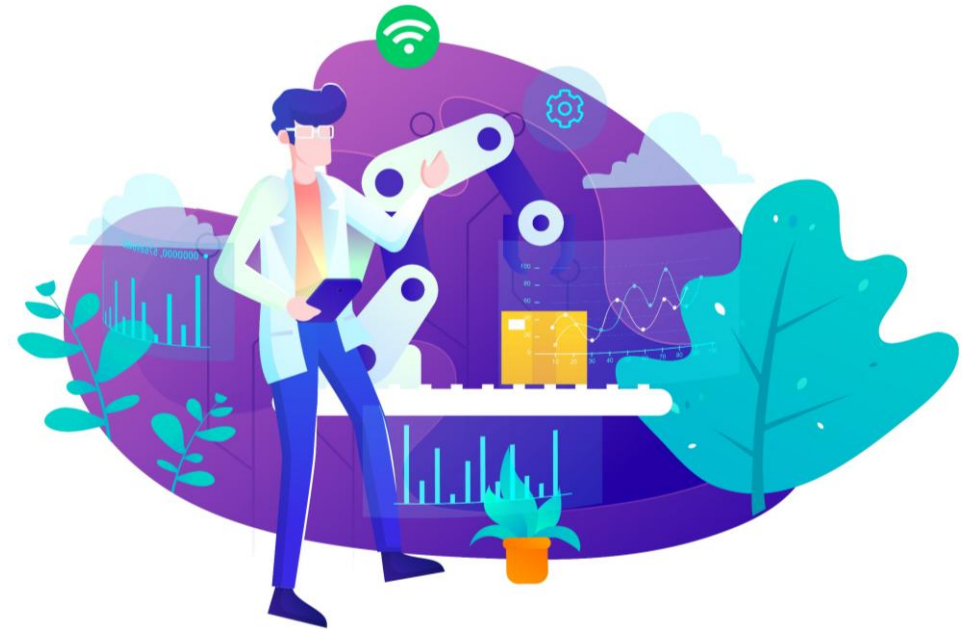
MAR/2026



BUSINESS



IT





## PROCESSOS

- S&OP: people, systems, maturity, S&OE?
- Purchases follow up?
- Maintenance: preventive, predictive, systems?
- Production: order posting balance and completion? Controls OEE?
- Financial: inventory policy, price table?
- Commercial: unconstrained forecast?
- PLM: phase in/out?
- Engineering: routing and structure with version?
- Delivery Date Promise?



## DATA

- Sell In / Sell Out
- Order by Channel
- Forecast by Channel/ WH
- Stock by WH, Expiration Date
- Lot Control
- Structure with Validity
- Alternative Structure (with version)
- Relevant Setup Times
- Routing with Alternative Machine
- Alternative Routing (with version)
- Inventory Consumption History
- Sales History



## SYSTEMS

- ERP: Version?
- ERP: Database?
- ERP: Internal Autonomy?
- PLM: Exists?
- DRP: Has it?
- MES: Has it?
- LOGISTIC: Has it?
- MAINTENACE: Has it?



## INDICATORS

- WMAPE
- OTIF
- OEE
- INVENTORY TURNOVER: RM/FG
- DAYS OF INVENTORY: RM/FG
- PLAN ACCURACY
- ADHERENCE
- STOCKOUT



## DEMAND

- How does the unconstrained demand process currently work? People, systems, methods, deadlines.
- How often, on average, do they update the sales forecast? What is the horizon?
- Hierarchy?
- What is the accuracy level?
- What is the order backlog horizon?
- What is the sales forecast horizon?
- Do they update in the current month (M0)?



## INVENTORY

- Segmentarion (ABC, XYZ)?
- What is the FG inventory policy?
- What is the WIP inventory policy?
- What is the RM inventory policy?
- What is the current inventory volume?
- Obsolet/Slow Moving?
- Is there stockout control?



## PLANNING

- Generation of net production and purchasing requirements by MRP? How often? How long does it take? How are materials parameterized?
- Status of Requisitions and Purchase Orders?
- How many people in PPCP?
- How long to generate the MPS?
- How often, on average, is planning performed?
- How are delivery dates or inventory replenishment established?
- Do they have minimum, maximum, multiple lots?



## CAPACITY

- Calendar
- Resources/ Groups
- Tool
- Labor
- Third Parties
- Maintenance
- New Machines
- Priority (due date, customer, setup)?



## VOLUMETRICS

- Active Finished Products
- Média de Itens na Estrutura?
- Average Operations per Item?
- Average Releases per Year?
- Quantity of Production Resources?
- Quantity of Production Orders and Purchase Orders?



## SECURITY

- Authentication (SSO)
- Sysadmin
- LLM Engine
- Backup
- Pentest
- Disaster Recover
- SLA
- Traceability
- NDA

ANNEX: Security Guide.



## ARCHITECTURE

- Cloud, Private Cloud or On Premise?
- Infra Standard or Upgrade?
- Laptop
- PRD & HML



## OPERATIONS

- VPN
- Remote Acesss
- Login
- First Level Support
- Helpdesk



## INTERFACES

- APS
- ERP
- PLM
- MES
- WMS
- DRP
- LOGISTICS
- WEB PORTAL



## INPUTS

- ORDER
- FORECAST
- ITEM
- ROUTING
- RESOURCE
- RESOURCE GROUP
- MATERIAL STRUCTURE
- PRODUCTION ORDER
- PURCHASE ORDER
- STORAGE RESOURCE
- TEMPLATE CALENDAR
- STANDARD CALENDAR
- EXCEPTION CALENDAR
- MAINTENANCE



## OUTPUTS

- PO
- OC



## INTEGRATION

- Upload Files?
- Integration Layer?
- API
- Total/incremental interface

ANNEX: Integration Guide.



PROCESSOS



DATA



SYSTEMS



INDICATORS



DEMAND



INVENTORY



PLANNING



CAPACITY



VOLUMETRICS



SECURITY



ARCHITECTURE



OPERATIONS



INTERFACES



INPUTS



OUTPUTS



INTEGRATION